



kinship

COMMUNITY FOOD CENTER

Annual Impact
Report 2022

FORMERLY RIVERWEST FOOD PANTRY



“

“I come to this place and feel like I am surrounded by people that are like family.”

– Mary, dedicated community volunteer

Annual Snapshot 2022



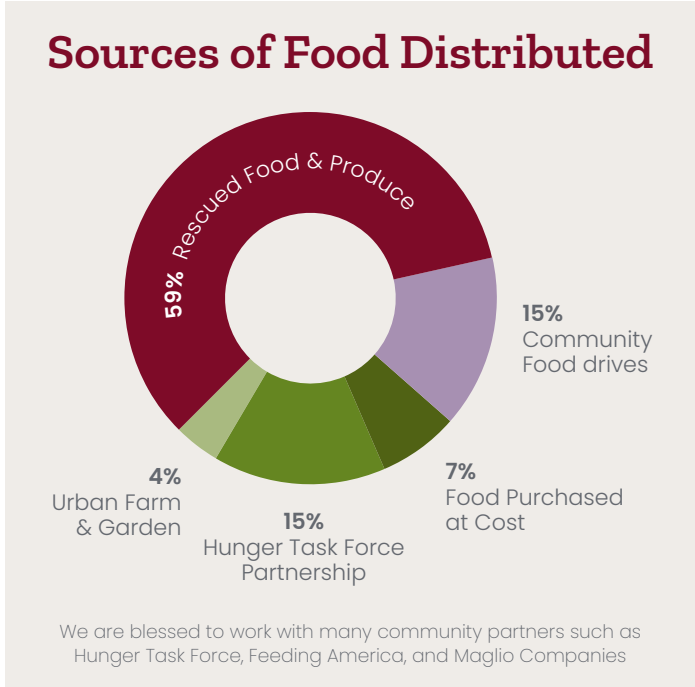
14,933
Community Members Served

290k lbs
Food Distributed



78k lbs
Produce Distributed

499
Referrals Made for Families in Crisis for mentoring and other direct assistance to find greater stability



19,950
Volunteer Hours



8,500
Café Meals



The Work of Kinship



Photo by Tom Grimm

Dear Friends,

Thank you for being part of our community! At the beginning of 2022 we reopened inside post-covid and our community is back, stronger than ever. The warmth, the love, and the laughter of gathering for meals at our market has been a needed balm for myself and for so many.

More than ever, we believe in the focus of our mission. We believe

in Kinship. Our theory of change is simple – social connectedness and trust are the keys to improving health and stability. Gathering around great food cultivates a seedbed of relationships to confront isolation and nurture hope.

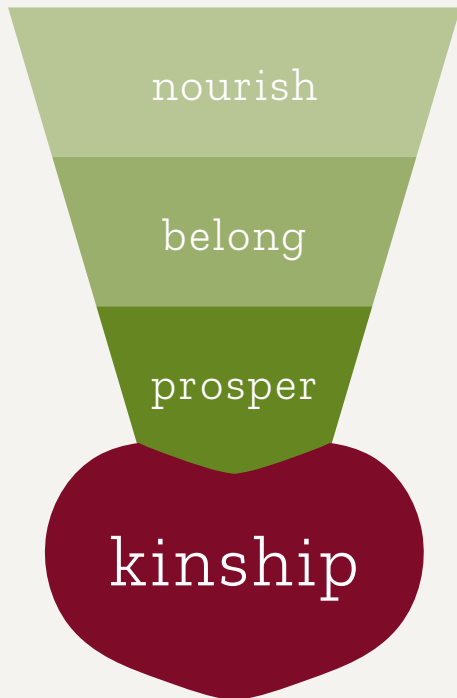
In the fall of 2022, we surveyed 800 households to better understand the impact of our mission on their lives, and we're excited to share a few highlights from that survey in this report. While our neighborhood continues to grapple with significant challenges, there is also much to celebrate. People are cooking more, they are building deep relationships, and every single person surveyed believes they will find the help and support they need at our food center.

We believe in Kinship. We believe that fostering solidarity across racial and economic dividing lines humanizes our differences and mobilizes the community to take action against the systems that perpetuate inequality in our city. If you're holding this impact piece, you're connected to us in some way. May you feel a deep pride about what you're helping us build.

Thank you for believing in Kinship!

– Vincent Noth
Executive Director

Our Theory of Change



IF WE CREATE:

A Dynamic Food Culture

Where people grow, shop, cook, and eat together

A Place of Radical Kinship

Where people find belonging, through giving and receiving in mutual vulnerability

A Pathway to Health & Economic Opportunity

Where people are accompanied to overcome crises & barriers to long-term stability

THEN WE WILL SEE:

People who are nourished. People who belong. People who Prosper.

Mission Pillar

NOURISH



Expanding Food Access in our Community

8/10 of our shoppers lack access to fresh produce and have someone in their home living with **Type 2 Diabetes** or **High Blood Pressure**.



||

My daughter is helping with demos and has made lots of friends. Now, I can't put her back in her shell because of this place!

Since coming to Kinship, Patty has watched Barbara grow up making friends and gaining confidence in her own skills and abilities. According to Patty, Barbara makes sure her mom brings her every Saturday so she can help cook the food demonstrations.

12k

Pounds of Organic Produce Grown in our Farms & Gardens



44k

Pounds of Dairy, Eggs & Oil Purchased & Distributed

Expanding food access provides opportunities for people to become more deeply engaged around nutrition.



8,500

Café Meals Distributed



87

Shared Recipes and Cooking Demos

90%

of community members say they are now cooking with more produce at home as a result of shopping at Kinship.

Mission Pillar

BELONG



Everyone Gives. Everyone Receives.

Low-income households are **6 times more likely to be socially isolated**, worsening the effects of poverty.

The journey looks different for each of us.

Whether someone comes once, or comes one hundred times, our programs and holistic approach have a significant impact on lives in our community—shopper, donor, and volunteer alike.



”

You guys don't understand what you're giving people when you give them the opportunity to volunteer.

As a mother of eight, Lolita is always looking out for her family trying to make sure that she is able to provide for all their needs. Volunteering has given her family a new sense of connection to their larger community.



“

I receive so much more. I receive this wonderful sense of belonging. Truly it is very, very important.

Tom has been volunteering at the food center for many years. Tom has come to rely on the Food Center community as his family, especially recently with the loss of loved ones.

Our culture of mutuality enables us to go deeper into each other's lives and build trusting relationships.



250 Collaborative Meal Participants

1 out of 5
of our Volunteers are also Shoppers

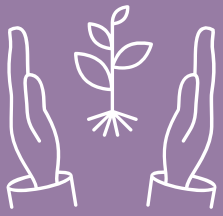


5,700
Volunteers
in 2022

85% of community members say they have made new friendships at Kinship.

Mission Pillar

PROSPER



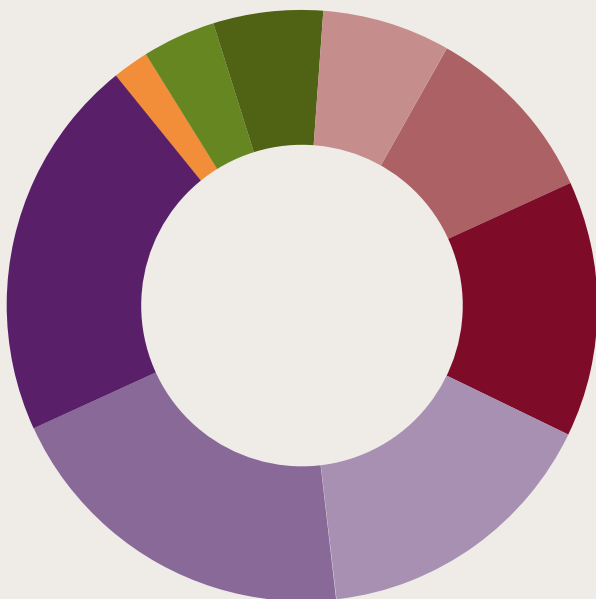
Community Changes Our Lives

Lack of support systems and trauma diminish people's ability to find health and stability.



78

Long Term Mentoring Relationships



Community Partner and Resource Referrals

499 Referrals to 76 Partner Agencies

- 21% - Housing
- 20% - Employment
- 16% - Transportation
- 14% - Household Goods
- 10% - Other
- 7% - Financial Stability
- 6% - Clothing
- 4% - Mental & Physical Health
- 2% - Energy Assistance



“

I had nothing. I was afraid I was going to get kicked out of my apartment or starve to death. At Kinship, everybody here was all-hands-on deck for me.

After he lost his car and job, Nathaniel didn't know where to turn. At Kinship, he was able to get assistance with his food stamp application, find transportation, stabilize his housing, and start looking for employment. Renewed, he considers himself a big brother to everyone in the community.



70 Households Protected from Housing Instability

Relationships of accompaniment create a road to stability for many members of our community.



100%

of community members said they know they can get support and help at Kinship.

Our Programs at a Glance



Shop

FRESH FOOD MARKET

A fresh food market that integrates health education, cooking demonstrations, a food bar, and connections to community resources.



Grow

URBAN FARM

A 27,000 square foot urban hoop house vegetable farm that grows thousands of pounds of organic produce to feed and educate the community.



Feast

COLLABORATIVE MEALS

Collaborative meals that bring a diverse group around a common table to explore food traditions and whole food culinary skills.



Stride

CRISIS ASSISTANCE & MENTORING

A mentoring program that accompanies people in crisis to overcome their barriers to health and economic stability.



Form

TRAINING AND EDUCATION

Service-based training for volunteers and neighborhood residents in spiritual formation, social justice, and civic action.



Mission Internship

A YEAR OF SERVICE

A residential "mission-year" of service and Catholic spiritual formation for young adults.



Financials

Our hearts are filled with gratitude as we celebrate the generosity of our community to enable us to accomplish our mission.

Income



- 70% - Philanthropic
- 25% - In-kind
- 5% - Investments & Other

Program Expenses



- 47% - Shop
- 16% - Grow
- 15% - Stride
- 10% - Feast
- 9% - Mission Year
- 3% - Form

Philanthropic Sources for 2022 Annual Fund



- 63% - Individuals
- 13% - Bequests
- 12% - Foundations
- 9% - Corporations
- 3% - Organizations

Everyone Gives. Everyone Receives.

Staff

Vincent Noth

Executive Director

Wayne Breitbarth

Managing Director

Caitlin Cullen

Food Center Director

Jennifer S. Mehr

Advancement Director

Mark Bergemann

Systems and Strategy Manager

Cole Compton

Urban Farm Coordinator

Amanda Fahrendorf

Senior Communications Associate

Tyrone McKee

Workforce Development Manager

Bernard Madison

Inventory Assistant

Lindy Meer

Controller

William Olivier

Human Services Specialist

Launa Owens

Human Services Associate

Susan Peinsipp

Development Associate

Nancy Rodriguez

Human Services Manager

Natalie Ross

Food Wellness Associate

Samantha Vosters

Mission Intern and Formation Manager

Mission Interns

Jack Bolog

Volunteer & Community Engagement Coordinator

Matthew Davenport

Formation & Training Coordinator

Krista Fuller

Operations Coordinator

Eva Grumbine

Human Services Coordinator

Emma Holtan

Food Wellness Coordinator

Molly McCaulley

Food Acquisition Coordinator

Andrew Miller

Human Services Coordinator

Jaylen Moulton

Marketing & Communications Coordinator

Preben Rasmussen

Human Services Coordinator

Claudia Sahn

Volunteer & Community Engagement Coordinator

Katy Shimp

Recruiting & Training Coordinator

Anna Wells

Urban Farm Coordinator

Board

Ellen Bartel

President

Sisters of the Divine Savior

Paul Burgoyne

Vice President

The Boelter Companies, Retired

Tracy L. Meeks

Treasurer

Old National Bank

James Hegarty

Secretary

GE Healthcare

David L. Bourne

Quarles & Brady LLC, Retired

Jacquelin Coby-Beaver

Advocate Aurora Health

Lori Craig

PNC Bank

Nicholas Fallucca

Palermo's Pizza

Chad Griesel

Family of Four Parishes

Berent Kowarick

J.P. Morgan Private Bank

Melinda Krueger

Salesforce, Retired

William Michaels, Jr.

Deloitte, Retired

Eugene E. Nelson, Jr.

Project RETURN Milwaukee

Marcelline E. Pelzer

Communications Consultant

Steven D. Robinson

Advocate Aurora Health

Sylvia N. Wilson, PhD

MKEGrind



kinship
COMMUNITY FOOD CENTER

2610 N. Martin Luther King, Jr. Drive
Milwaukee, WI 53212

kinshipmke.org